

SUMMER 2024

SAMMAMISH

Parks & Recreation

INSIDE THIS ISSUE:

Volunteer Opportunities.....pg 5

Community Events.....pg 6-7

Summer Camps.....pg 8-10

Rental Information.....pg 13

ECRWSS Postal Customer



 sammamish.us

PRSR1 STD
U.S. POSTAGE
PAID
Permit #1
Seattle, WA



Contacts

Emily Scott

Recreation & Cultural
Services Manager
escott@sammamish.us
(425) 295-0524

Summer Stumpf

Recreation Supervisor
sstumpf@sammamish.us
(425) 295-0556

Annelise Diers

Rental & Systems Coordinator
adiers@sammamish.us
(425) 295-0586

Francine Sanchez

Volunteer Coordinator
fsanchez@sammamish.us
(425) 295-0565

Sebastian Ritacco

Restoration Specialist
sritacco@sammamish.us
(425) 414-0829

Alisha Parks

Administrative Assistant
aparks@sammamish.us
(425) 295-0585

Stay Connected

Sign up for Email Alerts

Receive Updates on Arts, Parks &
Recreation News, Special Events,
and Volunteer Opportunities!

sammamish.us/subscribe



or scan QR

Follow and Like us on Facebook

www.facebook.com/SammamishParks

Sponsorships

Putting together a community event or program is a lot of work and takes a lot of resources! The city manages several events and programs that are perfect ways to get your business in front of potential and existing customers and show your support for the community.

GAIN MORE EXPOSURE IN THE SAMMAMISH COMMUNITY!

sammamish.us/government/parks-rec-facilities/sponsorship/

The Switch is On

Protect your Parks by protecting the environment! Approximately 95% of natural gas emissions in the City of Sammamish come from residential use. Natural gas is a major contributor to air pollution, water pollution, and climate change.

Considering switching from fossil fuels to all-electric renewable energy, but unsure of where to start? The Switch is On campaign is a collaboration between multiple jurisdictions and nonprofit partners in Washington State. This digital platform is a one-stop for information on building electrification that provides resources for people who want to switch out gas appliances for cleaner, more efficient electric ones.

What the Switch is On can do to help:

- Finds electrification incentives by zip code
- Provides information on vetted contractors
- Provides home electrification options for owners and renters

Switching to electric can lower emissions, improve local air quality, and often reduces household energy bills.

Switch today! switchison.org/switch-is-on-washington/





Sammamish's Parks and Recreation system is an integral part of our healthy and sustainable community by connecting people to nature, play and culture. Sammamish's Parks and Recreation system contributes to the quality of life for the community by creating a legacy of diverse and quality parks, exceptional recreation programs and protected natural resources.

Our Core Values

Inclusion

We strive to reflect diversity, equity and inclusion in all of our activities and services.

Sustainability

We work to improve environmental and recreational functions and improve the connection between people and the environment.

Collaboration

We seek to strengthen partnerships between the City of Sammamish, private organizations, volunteers and community groups to efficiently provide recreational opportunities to our residents.

Health & Wellness

We contribute to Sammamish's health and wellness by providing safe and accessible parks, facilities, activities and events.

Customer Service

We provide a high-quality parks system through exceptional customer service and stewardship.

Accountability

We commit to being professionally accountable to our customers, to our partners, to one another and to ourselves.

Fair Play

The City of Sammamish complies with the State of Washington's "Fair Play in Community Sports Act" (Chapter 467, 2009 Laws, effective date July 26, 2009) that prohibits discrimination against any person in a community athletic program on the basis of sex. Any questions or comments may be directed to the City of Sammamish Parks and Recreation Director.

RECREATION PROVIDERS

The City of Sammamish has a unique approach to providing recreation programs and services that is based on partnerships and agreements with other community-based recreation providers or through contract with other independent instructors for services. The City relies on other providers for most of its recreation services. The following is a list of the primary providers.

	Boy Scouts Chief Seattle Council www.seattlebsa.org/alpine		Karate West www.karatewest.com
	Central Washington University https://www.cwu.edu/about/campus-locations/sammamish/		Lake WA Youth Soccer Association www.lwysa.org
	Camp Fire USA www.campfire-usa.org		Lake Washington School District www.lwsd.org
	City of Issaquah www.ci.issaquah.wa.us		Pine Lake Club www.columbiaathletic.com
	City of Redmond www.redmond.gov		Pine Lake Community Club www.pinelakecommunityclub.com
	DC Speed Sports www.dcspeedsports.com		Plateau Club Recreation Center www.plateauclub.com
	Eastlake Little League www.eastlakell.org		Positive Ally www.positiveally.org
	Eastlake Youth Football Association www.eastlakeyouthfootball.org		Sammamish Community & Aquatic Center www.seattlemca.org
	Eastlake Youth Lacrosse www.eastlakelacrosse.org		Sammamish Library www.kcls.org/locations/sammamish/
	Girls Scouts of Western Washington www.girlscoutsww.org		Sammamish Little League www.sammamishlittleleague.org
	Glass House Dance www.glasshousedance.com		Sammamish Saddle Club sammamishsaddleclub.blogspot.com/
	Issaquah Dance Theater Inc. www.issaquahdance.com		Sammamish Boys & Girls Club www.positiveplace.org/sammamish/
	Issaquah FC www.issaquahfc.org/home.php		Skyline Youth Football Association www.skylineyouthfootball.com
	Issaquah School District www.issaquah.wednet.edu		The Sculptor www.sculptorfitness.com
	Friends of Lake Sammamish State Park www.lakesammamishfriends.org		Skyline Youth Lacrosse www.skylinelax.com
	Issaquah Swim Team www.istsockeyes.org		True Martial Arts www.truemartialarts.com
	Issaquah Youth Lacrosse www.issaquahyouthlacrosse.com		World Tae Kwan Do Center martialartswashington.com



Volunteerism All in One Place

Get Involved in 2024! Volunteer your time and talents to support City of Sammamish events and projects!

One-time or ongoing opportunities are available to fit your schedule. Volunteering is a great way to connect with community members and make a difference where you live. Please visit <https://sammamish.galaxydigital.com> for details on opportunities in the community, ability connect with other volunteers and an account to keep track of your data too.

Our volunteer program is designed to bring volunteers and staff together to assure the success of City programs and services. Volunteers provide valuable support and assistance to the public in a variety of programs and services throughout many City Departments.

If your organization would like to volunteer as a group, please contact Sebastian Ritacco sritacco@sammamish.us and Francine Sanchez fsanchez@sammamish.us to set up a group volunteer opportunity.

Walking Tour Guide of Restoration Sites

Stewards and volunteers have collaborated with the City of Sammamish, the Washington Native Plant Society and other regional partners to restore and conserve native plant communities in forests and stormwater sites throughout the area. We invite you to embark on a self-directed walking tour to learn more about what your community members are doing to support local ecosystems! These sites are undergoing active restoration so please stay on the trails!

Park Projects

There are a variety of volunteer projects happening in parks around Sammamish. Tasks can include native plantings, trail building, wetland and stream restoration, invasive management and storm cleanup.

Sammamish Stewards

The Sammamish Stewards preserve, protect and promote the natural environment within the City of Sammamish. The Sammamish Stewards are a volunteer group of community members actively involved in many areas of environmental work. More info is available at the Sammamish Stewardship website.

For specific details, please contact sammamishstewards@gmail.com

Learn More About Sammamish Stewardship:

- Stormwater Stewards
- Work to promote native plants around select stormwater ponds.
- Native Plant Stewards
- Employ restoration strategies to enhance native plant communities in partnership with the Washington Native Plant Society.
- Wildlife Habitat Stewards
- Educate the community to improve wildlife habitat in partnership with the National Wildlife Federation.

Adopt A Storm Water Pond:

Interested in adopting a storm water pond in your community? **Please contact Sebastian Ritacco; sritacco@sammamish.us**

Adopt A Road:

Interested in adopting a road in your community? **Please contact Francine Sanchez fsanchez@sammamish.us**

COMMUNITY EVENTS



SAMMAMISH RIG-A-PALOOZA

Over 20 service vehicles & personnel
- plus activities!



SATURDAY, MAY 11TH 11AM-2PM
SAMMAMISH COMMONS



PRESENTED BY:
CITY OF SAMMAMISH
BECU • ICODE
TAI KWON DO



Sammamish
Parks and Recreation

Rig-A-Palooza

Come explore vehicles while interacting with community helpers to discover how they keep our city safe, clean and FUN-ctioning! Food trucks, bouncy houses, balloon artists and face painting will be available for the kids! All activities are free.

Saturday, May 11, 2024
11:00am - 2:00pm
Sammamish Commons Plaza, (801 228 Ave SE, Sammamish)

Sammamish Farmers Market

The Chamber of Commerce presents the Sammamish Farmers Market, enhancing our spirit of community by creating a gathering place for the Sammamish community, while helping to promote and enhance the economic vitality of our local farmers.

For more information, go to:
sammamishfarmersmarket.org

Wednesdays, May - September
4:00pm - 8:00pm

Sammamish Commons Plaza, (801 228 Ave SE, Sammamish)

Sammamish Pride Event

Join the City of Sammamish in Celebrating Pride! City and community organizations will gather at Sammamish Commons to kick off Pride Month. This event holds significant importance as it marks the beginning of Pride and represents the city's allyship with the LGBTQIA community.

Wednesday, June 5, 2024
5:30pm

Sammamish Commons Plaza,
(801 228 Ave SE, Sammamish)



Fourth on the Plateau

Join us for some Red, White and Blue family fun presented by the City of Sammamish! We will have a modified event this year with Food Trucks, Kids Activities, an Outdoor Yard Games area and Giveaways! The firework show starts at 10 pm. This event is FREE and open to all.

Thursday, July 4
5:00pm - 10:15pm
Sammamish Commons Plaza, (801 228 Ave SE, Sammamish)

COMMUNITY EVENTS

KidsFirst!

Performances are geared towards toddlers to elementary-age children. All events are free and open to the public. Performances take place Tuesdays at 1:00 PM.

July 9: The Bubbleman

July 16: Reptile Isle- Hands on Adventure

July 23: Pollinator panel painting craft

July 30: King County Library System- Story & Activity

August 6: TBD

August 13: TBD

August 20: The Zaniac comedy show

1:00pm - 2:00pm

Sammamish Commons Plaza, (801 228 Ave SE, Sammamish)

Concerts in the Park

These summer concerts are our longest running special event series. The weekly outdoor concerts happen Thursday in July and August. This event is free and open to the public. Bring your own dinner or purchase dinner onsite from a food truck vendor.

July 11: Heels to Hardwood

July 18: Laurel Canyon Legacy

July 25: Aaron Crawford

August 1: Victims of Love- Eagles Tribute Band

August 8: Eden

6:30pm - 8:00pm

Pine Lake Park, (2401 228th Ave SE, Sammamish, WA 98075)

Shakespeare in the Park

Seattle Shakespeare Company presents classical plays performed outdoors. Grab your picnic blanket or low-back chair and come enjoy the show.

Two Gentlemen of Verona

Friday, July 12, 2024

7:00pm

Klahanie Park, (25000 SE Klahanie Blvd, Issaquah, WA 98029)

Celebrate Sammamish at our Silver Jubilee

Our wonderful city is turning 25 this year. Please join us for music, food and a walk down memory lane.

Friday, August 16, 2024

5:00pm - 9:00pm

City Hall Plaza, (801 228th Ave SE, Sammamish, WA 98075)

SUMMER CAMPS

The City of Sammamish has a unique approach to providing recreation programs and services that is based on partnerships and agreements with other community-based recreation providers or through contract with other independent instructors for services. The city relies on other providers for most of its recreation services.

If you or your group wants to partner on a program or event, please reach out to Emily Scott – Recreation & Cultural Services Manager – escott@sammamish.us



SUMMER CAMP GUIDE

www.positiveplace.org/clubs/sammamish

Summer Day Camp

In this action-packed camp, kids will have a summer to remember! Days are packed with field trips & many themed activities. Don't miss our End of Summer BBQ Week 9!



Pre-Teen Camp

This 4th - 5th camp is full of adventure & exploration! From cooking lessons to solving mysteries to we are going to do it all! Don't miss our Field Day at Husky Stadium in July!



Teen Camp

This camp is full of field trips, 4 per week to be exact! Teens will go everywhere ranging from short hikes to MoPop to a Mariners game!



Athletics Mini Camp

This K-6th camp will teach kids of all experience levels team building skills, fundamentals and game regulations. Each weekly theme is a different sport!



2023 - 2024 Annual Membership is required for all Program Registrations

Camp Dates & Hours

June 24 - August 25
8:00am - 6:00pm

Athletic Camp Dates

June 24 - August 25
Time & Location TBD



To Register for any King County Club Program scan the QR code above

SCHOLARSHIPS ARE AVAILABLE!

Challenge Island: Slimetopia 3

In this bestselling Slimetopia sequel, the world is being taken over by slime! You and a crew of STEAM Teammates will ooze with excitement as you design your own Slimeliner Jet and fly to a different slimy continent every day. You'll mix up an amazing array of internationally-inspired slimes from Italian Pizza Slime to Ghana Chocolate Slime to Pacific Ring of Fire Slime to a world of other slimes in between. This squishy, squashy, sensational slime adventure is sure to set out in a flash, so book your Slimetopia Airlines ticket today!

Ages: 7 - 11
M - F 7/8 - 7/12 9:00am - 12:00pm
M - F 8/5 - 8/9 9:00am - 12:00pm

Location: East Sammamish Park
Fees: \$275

Register at:
challenge-island.com/greater-seattle

Challenge Island: Pets Palooza Camp

Wag on over to the most PAWSOME camp in town! You and your STEAM Team will engineer a world created just for pets: From Pets Palooza Hotel Day to Having a Ball Day to Give a Dog a Bone Day to Salty Sea Dog Day to a very special Rescue Pets Day. You'll even get to adopt adorable pretend pets of your own and create habitats to match their needs and personalities! This STEAMtastic camp gets two paws up and is a must for every pet-loving kid!

Ages: 7 - 11
M - F 7/22 - 7/26 9:00am - 12:00pm
M - F 8/19 - 8/23 9:00am - 12:00pm

Location: East Sammamish Park
Fees: \$275

Register at:
challenge-island.com/greater-seattle

Challenge Island: Island Doll Camp

Rollerblade on down to the dreamiest, STEAMiest camp in town. You and a STEAM Team of friends will help design and deck out our Island Doll Land complete with cool convertibles, pink waterslides and seriously stylin' Island Doll STEAM houses! You'll bring Downtown to life with your own doll-inspired businesses, spend a day in the sun at the Island Doll Beach and Boardwalk, camp out under the stars in your own Island Doll Treehouse, and take to slopes at Island Doll Ski Resort. Bring an eye for design, a taste for adventure, and your favorite 11.5-inch fashionable friend to this blockbuster Challenge Island camp!

Ages: 7 - 11
M - F 7/15 - 7/19 9:00am - 12:00pm
M - F 8/12 - 8/16 9:00am - 12:00pm

Location: East Sammamish Park
Fees: \$275

Register at:
challenge-island.com/greater-seattle

Challenge Island: STEAM Tanks Entrepreneur Camp

Calling all innovative and inventive kids to an adventure in STEAM and entrepreneurship! You and your STEAM Team will design, create and open new businesses every day: From PIZZAprenur Day SWEETreprenur Day to SLIMEpreneur Day to PETpreneur Day to HAUNTpreneur Day. Can you convince the island sharks that your STEAM Team's business belongs in the new Challenge Island Mall? Don't miss out on this-one-of-a-kind entrepreneurial experience!

Ages: 7 - 13
M - F 7/29 - 8/2 9:00am - 12:00pm
M - F 8/26 - 8/30 9:00am - 12:00pm

Location: East Sammamish Park
Fees: \$275

Register at:
challenge-island.com/greater-seattle

SUMMER CAMPS



Nature Vision: Cascade Curiosity Camp

Children are naturally curious, and we're here to develop that curiosity into scientific thinking in nature! The area where we live has endless opportunities for investigation, and alongside our experienced and professional educators, campers will dig deep into what the Pacific Northwest has to offer. Activities will include naturalist skill-building in data collection, scientific drawing, sustainability, and more. Campers will have hands-on interactions with our collection of pelts, skulls, and natural artifacts. By the end of the week, they will be able to use their newly developed identification and investigation skills to better understand our environment. Satisfy your curiosity with Nature Vision this summer and see the natural world in a whole new light!

Ages: 6 - 11

M - F 7/22 - 7/26 9:00am - 4:00pm

Location: Beaver Lake Park

Fees: \$490

Register at:

naturevision.org/sammamish-summer-camp-registration

Nature Vision: Nature Art Camp

Join us at the park this summer to examine how artists have been inspired by the natural world and to create art! From cave paintings to impressionist landscapes, legends and myths to interactive sculpture, nature has inspired artists from all over the world in diverse ways. Campers will study art styles including natural sculpture, painting, collaging, creative writing, and more with our team of experienced professional educators. Explore the varied natural areas of the park and delve into multiple artistic styles and practices. Then, create wonderful works of art using a variety of materials and talents to showcase unique perspectives.

Ages: 6 - 11

M - F 7/15 - 7/19 9:00am - 4:00pm

Location: Beaver Lake Park

Fees: \$490

Register at:

naturevision.org/sammamish-summer-camp-registration

Craft & STEM Camp

Embark on an exhilarating adventure of discovery at our Craft & STEM Camp! Designed for young minds to explore Paper crafts, Wood & Ceramic Painting, DIY STEM projects, Mosaic Art, Collage Art, Weaving, Macrame, Paper Quilling, Fun Math, and Vocabulary. All Art materials will be provided. Every week will consist mixed and different activities.

Ages: 4 - 10

Week 1: M - F 6/24 - 6/28 9:00am - 12:00pm

Week 2: M - F 7/8 - 7/12 9:00am - 12:00pm

Week 3: M - F 7/22 - 7/26 9:00am - 12:00pm

Week 4: M - F 7/29 - 8/2 9:00am - 12:00pm

Location: Lower Commons Park Picnic Shelter

Fees: \$200

Register at:

creativecanvasclub.mydurable.com

Planet Youth Project Summer Camp

Join Planet Youth Project for a FREE fun and interactive weeklong camp, open to elementary school students of all grades! Students will be introduced to the basics of climate change and its effects through games, outdoor activities, experiments, and more! **Learn more at planetyouthproject.org!**

Ages: 6 - 11

M - F 7/22 - 7/26 9:00am - 12:00pm

Location: Ebright Park Picnic Shelter

Fees: FREE

Register at:

tinyurl.com/pypsummercamp



Beaver Lake

Beaver Lake is a low to moderately physically challenging 83-acre Park. Many of the trails are wide and flat, accessible by people of most abilities, although very few of these paths are paved and instead are gravel- or dirt-covered. The park offers a relatively small number of options for hiking in wooded trails, but includes wider paths to access adjacent woods and fields near a fenced off-leash dog area. The area we utilize for camp home base is a large covered patio space next to the lake and a short walk to the restrooms. As the restrooms are located behind another building, campers must be prepared to stay with their group and use restrooms as directed during designated restroom stops to ensure everyone's safety. This park is very popular with the neighborhood community, next to a large lake, and our main space is a wide open grassy playfield, so this site best serves campers who are who can self-manage staying with their group and inside the marked boundaries of our camp.

SUMMER CAMPS

In partnership with the City of Sammamish, Skyhawks Sports Academy has helped young athletes improve their sports skills while making memories to last a lifetime. Through the wide variety of safe, fun and skill-focused activities offered each year, tens of thousands of children experience the joys and benefits of athletics in an engaging, progressive learning environment. Most importantly, Skyhawks incorporates the vision: teaching life skills through sports.

skyhawks.com

Basketball Camp

Ages: 6 - 12

6/20 - 6/21	Th, F	9:00am - 4:00pm	\$129
7/1 - 7/3	M - W	9:00am - Noon	\$109
7/1 - 7/3	Th, F	9:00am - 4:00pm	\$155
7/15 - 7/19	M - F	9:00am - Noon	\$179
7/22 - 7/26	M - F	9:00am - Noon	\$179
8/12 - 8/16	M - F	9:00am - Noon	\$179

Location: Ebright Creek Park

Beginning Golf Camp

Ages 5 - 10

7/1 - 7/3	M - W	1:00 - 4:00pm	\$109
7/22 - 7/26	M - F	9:00am - Noon	\$179
7/29 - 8/2	M - F	1:00 - 4:00pm	\$179

Cheerleading Camp

Ages 5 - 10

7/1 - 7/3	M - W	9:00am - Noon	\$109
------------------	-------	---------------	-------

Flag Football Camp

Ages 6 - 12

7/1 - 7/3	M - W	9:00am - Noon	\$109
8/5 - 8/9	M - F	1:00 - 4:00pm	\$179

Mini-Hawk (Baseball, Flag Football, Soccer)

Ages 4 - 7

6/20 - 6/21	Th, F	1:00 - 4:00pm	\$99
--------------------	-------	---------------	------

7/8 - 7/12	M - F	9:00am - Noon	\$179
7/15 - 7/19	M - F	1:00 - 4:00pm	\$179
7/29 - 8/2	M - F	9:00am - Noon	\$179
8/5 - 8/9	M - F	9:00am - Noon	\$179

Multi-Sport (Baseball, Flag Football, Soccer)

Ages 6 - 12

7/22 - 7/26	M - F	9:00am - 4:00pm	\$239
8/19 - 8/23	M - F	9:00am - Noon	\$179

Multi-Sport/Swim Combo

Ages 6 - 12

7/15 - 7/19	M - F	9:00am - 4:00pm	\$239
8/19 - 8/23	M - F	9:00am - 4:00pm	\$239

Soccer/Swim Combo

Ages 6 - 12

7/8 - 7/12	M - F	9:00am - 4:00pm	\$239
8/12 - 8/16	M - F	9:00am - 4:00pm	\$239

Soccer Camp

Ages 6 - 12

6/20 - 6/21	Th, F	9:00am - Noon	\$99
6/20 - 6/21	Th, F	9:00am - 4:00pm	\$129
6/24 - 6/28	M - F	9:00am - Noon	\$179
6/20 - 6/21	M - F	9:00am - 4:00pm	\$239

7/8 - 7/12	M - W	9:00am - Noon	\$179
7/22 - 7/26	M - F	9:00am - Noon	\$179
7/22 - 7/26	M - F	9:00am - 4:00pm	\$239
8/12 - 8/16	M - F	9:00am - Noon	\$179

Soft Lacrosse Camp

Ages 6 - 12

6/20 - 6/21	M - W	9:00am - Noon	\$99
--------------------	-------	---------------	------

STEM & Play: Football Camp

Ages 6 - 12

6/24 - 6/28	M - F	9:00am - 4:00pm	\$239
--------------------	-------	-----------------	-------

Tennis Camp

Ages 6 - 12

6/24 - 6/28	M - F	1:00 - 4:00pm	\$179
6/24 - 6/28	M - F	9:00am - Noon	\$179
7/1 - 7/3	M - W	9:00am - Noon	\$109
7/1 - 7/3	M - W	1:00 - 4:00pm	\$109
7/8 - 7/12	M - F	9:00am - Noon	\$179
7/8 - 7/12	M - F	1:00 - 4:00pm	\$179
7/15 - 7/19	M - F	9:00am - Noon	\$179
7/15 - 7/19	M - F	1:00 - 4:00pm	\$179
7/22 - 7/26	M - F	9:00am - Noon	\$179
7/22 - 7/26	M - F	1:00 - 4:00pm	\$179
8/19 - 8/23	M - F	9:00am - Noon	\$179

Location: Eastlake High School - Tennis Courts



PUBLIC ART

Throughout the years, the Arts Commission has played a key role in acquiring significant art pieces, integrating art and culture to create a sense of place, civic identity and unique character in Sammamish. Each showcased piece has a story. Explore the significance and the journey of the public art throughout the City.

Follow the link to see the amazing artwork on utilities wraps, murals, sculptures and much more!
sammamish.us/government/commissions/arts/art/

Drawing Herd

Drawing Herd is a free art workshop series by Coco Allred taking place across Sammamish parks this summer made possible by grant funding from the Sammamish Arts Commission. Designed for all ages and skill levels, the workshops use observation as a tool to both cultivate attention and foster connection. Drawing Herd was imagined in 2020 while faced with a deep need for connection and an urgency to rethink how we gather and use public space. The project aims to provide creative experiences in public parks to increase well-being for self, community, and place. Each class is co-taught with a special guest whose expertise ranges from parkour tricking to choreography to atmospheric science. Follow Drawing Herd on Eventbrite to register for classes beginning April 20th!

- Sa 7/13 10:00am - 11:30am
- Sa 7/13 12:00pm - 1:30pm
- Sa 7/13 2:00pm - 3:30pm

Location: Sammamish Big Rock Park Central

- Sa 7/21 10:00am - 11:30am
- Sa 7/21 12:00pm - 1:30pm
- Sa 7/21 2:00pm - 3:30pm

Location: Sammamish Native Plant Garden

- Sa 7/27 10:00am - 11:30am
- Sa 7/27 12:00pm - 1:30pm
- Sa 7/27 2:00pm - 3:30pm

Location: Sammamish Pine Lake Park

Register at: eventbrite.com/o/drawing-herd-33869704855



SAMMAMISH



COMMISSION

FAIRY HOUSE TRAIL

Sammamish Arts Commission is looking for creative & imaginative participants to contribute to the Fairy House Trail!

Submissions & Deadline:

Drop off at Sammamish City Hall
June 1st - June 15th

Fairy Houses will be displayed starting
Mid-June thru August at Big Rock Park South



Scan QR Code
for More Info



sammamish.us



PARKS PLANNING



How to be a sustainable park visitor:

- **Stay on Trails:** Leaving marked trails can damage ecosystems and disturb wildlife habitats. Stick to designated paths to minimize your impact.
- **Minimize Waste:** Practice leave no trace principles, including packing out all trash or disposing of waste in bins. Pack reusable items when possible, to minimize single-use plastics.
- **Respect Wildlife:** Observe wildlife from a distance and avoid picking plants. Never feed wild animals as it can disrupt their natural behaviors and lead to dependence on human food sources.
- **Reduce Carbon Footprint:** Choose environmentally friendly transportation options such as walking and cycling. When driving is necessary, carpooling or driving electric vehicles can help reduce carbon emissions.
- **Educate Yourself and Others:** Signs throughout Sammamish parks have information about our shared natural spaces and restoration and recreation opportunities. Share your knowledge with others to inspire them to be more sustainable park visitors.
- **Golden Rule:** Follow posted guidelines and regulations. Leave the park as you found it (or even better!) to preserve natural beauty and recreation opportunities for future generations.

Partial opening of new park: Big Rock Park South

The Sammamish Parks team is excited to announce that a portion of Big Rock Park South is now open to the community for trail use! This is the third and final property of a 51-acre phased land donation that began in 2010 with the donation of Big Rock Park North, followed by Big Rock Park Central in 2016. Over ½ mile of new trails at Big Rock Park South meander through the property, connecting to Big Rock Park Central in the north and SE 20th Street in the south. The three parks now boast nearly 4 miles of trails to explore and provide access from SE 20th Street all the way to the future Beaton Hill Park on SE 8th Street.

A temporary fence has been installed to delineate the open and closed sections of the park and is decorated with a unique art installation. This art was created by Sammamish community members and showcases pollinator habitats on painted wood panels.

With the master plan for this park adopted and with funding allocated in the future, we anticipate beginning design work for the first phase of improvements to the rest of Big Rock Park South, in 2025. In the meantime, we're thrilled to invite the community to explore these expanded trails!

If you would like to learn more about the park and about opportunities to participate in painting wood panels for the art installation, please visit:
www.sammamish.us/parks/brps

FACILITY RENTALS

The City of Sammamish offers two facilities available for events, weddings, birthday parties, reunions, meetings, etc. The Lodge offers an enclosed venue with log cabin charm and space to accommodate groups up to 150. The Pavilion is a beautiful open-air facility offering a stunning lake view as a backdrop for your special occasion and space to accommodate groups up to 100. Both facilities are available to rent year-round.

Picnic Shelters

The City of Sammamish offers 5 picnic shelters available for reservations March through September. Enjoy the park of your choice while hosting your gathering in a designated space. Several shelters are adjacent to athletic fields which may be reserved for an additional fee.

Beaver Lake Shelter	Capacity 50
East Sammamish Park Shelter	Capacity 40
Ebright Creek Park Shelter	Capacity 45
Lower Commons Park Shelter	Capacity 45
Pine Lake Park Shelter	Capacity 30

Athletic Fields

The City of Sammamish offers both artificial turf and natural turf fields for rent. The fields can accommodate baseball, softball, football, soccer, lacrosse and cricket. See individual field locations for specifics. Artificial turf fields are available for year-round use while natural turf fields are available March through October.

Eastlake Community Fields – Artificial Turf

Beaver Lake Park – Natural Turf

East Sammamish Park – Natural Turf

Klahanie Park – Natural Turf

Pine Lake Park – Natural Turf

All Lake Washington School District Fields within Sammamish boundaries

Treehouse Open Houses

The Treehouse will be open for visitors four times per month from March through October. These dates and times are posted online

If interested in visiting and viewing this amazing treehouse, you are at the right place. The City is only offering limited visitation by the public in order to preserve the integrity of the structure and protect the trees in which it resides.

Pre-registration is required to view and visit the treehouse. No walk-ups are allowed.



Beaver Lake Lodge

25101 SE 24th St, Sammamish, WA 98075

Overlooking Beaver Lake and surrounded by open grass areas, the Lodge offers a rustic log-cabin feel and quiet atmosphere that works for any occasion.

The 1,850 sq. ft. main room accommodates 150 people seated and has a gas fireplace. The kitchen includes a convection oven, stove top/oven and double-size refrigerator. Rental also includes the use of round tables, rectangular tables and chairs.



Beaver Lake Pavilion

25101 SE 24th St, Sammamish, WA 98075

This 2,500 sq. ft. open-air facility boasts high ceilings, an unbeatable lake view and a large, stone fireplace. This facility works great as a stand-alone rental and also serves as a fantastic complement for events held at the Beaver Lake Lodge. Six picnic tables and a barbecue grill are available for your use. The picnic tables may be moved to accommodate the needs of your group. Capacity is 100 people.

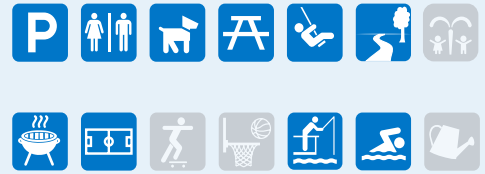
PARK AMENITIES

Beaver Lake Park



Lodge:
25101 SE
24th Street

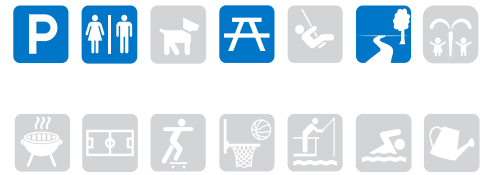
Ballfield:
2526 244th
Avenue SE



Beaver Lake Preserve



1400 W
Beaver Lake
Drive SE

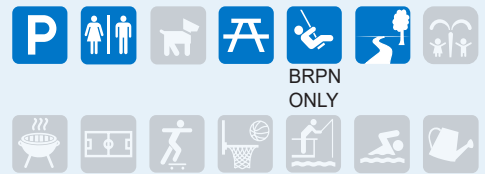
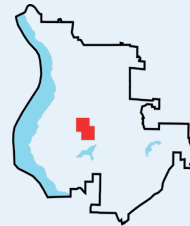


Big Rock Park North & Central



North:
21805 SE
8th Street

Central:
1516 220th
Avenue SE



East Sammamish Park



21300 NE
16th Street



Ebright Creek Park



1317 212th
Avenue SE



Evans Creek Preserve



Lower:
4001 224th
Avenue NE,
Redmond

Upper:
3650 Sahalee
Way NE



PARK AMENITIES

Illahee Park



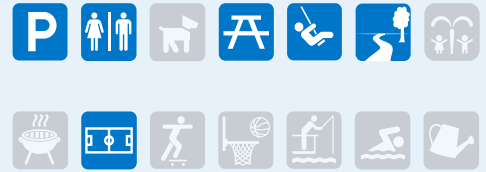
23500 NE
8th Street



Klahanie Park



25000 SE
Klahanie
Boulevard



NE Sammamish Park



21210 NE
36th Street



Pine Lake Park



2401 228th
Avenue SE



Sammamish Commons Park



Upper:
801 228th
Avenue SE

Lower:
550 222nd
Place SE

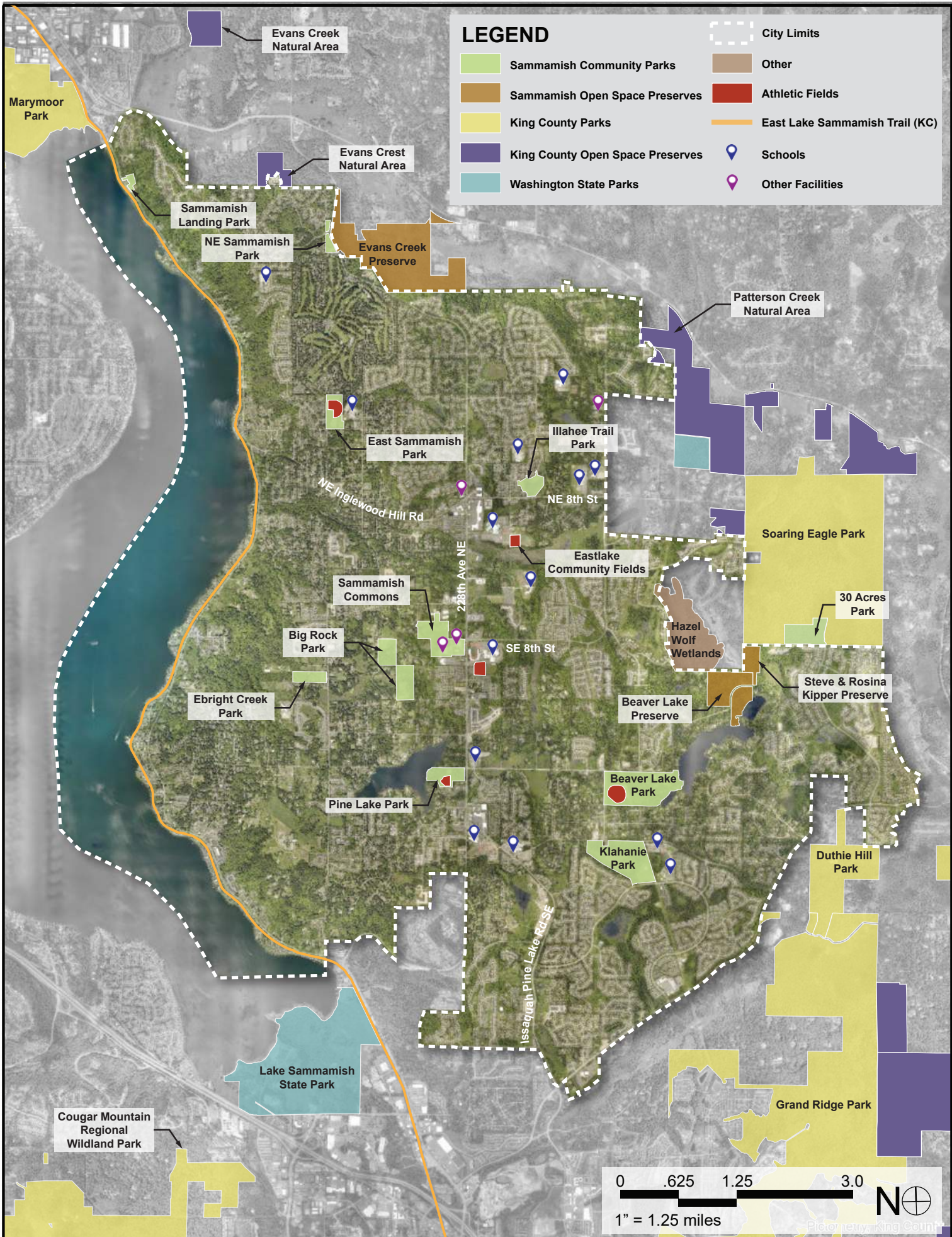


Sammamish Landing Park



4607 East
Lake
Sammamish
Parkway NE





LEGEND

- Sammamish Community Parks
- Sammamish Open Space Preserves
- King County Parks
- King County Open Space Preserves
- Washington State Parks
- City Limits
- Other
- Athletic Fields
- East Lake Sammamish Trail (KC)
- Schools
- Other Facilities

Marymoor Park

Evans Creek Natural Area

Evans Crest Natural Area

Sammamish Landing Park

NE Sammamish Park

Evans Creek Preserve

Patterson Creek Natural Area

East Sammamish Park

Illahee Trail Park

NE Inglewood Hill Rd

NE 8th St

Eastlake Community Fields

Soaring Eagle Park

Sammamish Commons

Big Rock Park

Ebright Creek Park

228th Ave NE

SE 8th St

Hazel Wolf Wetlands

30 Acres Park

Steve & Rosina Kipper Preserve

Beaver Lake Preserve

Pine Lake Park

Beaver Lake Park

Issaquah Pine Lake Rd SE

Klahanie Park

Duthie Hill Park

Cougar Mountain Regional Wildland Park

Lake Sammamish State Park

Grand Ridge Park

