



# NEWSLETTER

The official publication of the City of Sammamish

**NEW ART PIECE UNVEILED  
AT CITY HALL**

---

**INTRODUCING  
METRO FLEX**

---

**SUMMER EVENTS  
PREVIEW**



**May 2023**

# Sammamish City Council



**Kali Clark**  
Mayor



**Amy Lam**  
Deputy Mayor



**Roisin O'Farrell**  
Councilmember



**Rituja Indapure**  
Councilmember



**Kent Treen**  
Councilmember



**Pamela Stuart**  
Councilmember



**Karen Howe**  
Councilmember

## Council Meetings

Regular council meetings are held on the first Tuesday and third Tuesday of each month at 6:30 pm, with a study session on the second Tuesday at 6:30 pm. For more information, go to [sammamish.us/citycouncil](http://sammamish.us/citycouncil).

**To contact the Sammamish City Council, email [citycouncil@sammamish.us](mailto:citycouncil@sammamish.us).**

## Coffee with Council

On the first Saturday of every month at 9:30 am, join Sammamish City Councilmembers for a cup of coffee and conversation at Metropolitan Market in Sammamish. Depending on the weather conditions, the councilmembers may be in the outdoor seating area. Otherwise, you'll find them in the upstairs seating area near the cafe. We hope to see you there!



## Before Removing Any Trees, Check City of Sammamish Requirements

A Tree Removal Permit is required to remove significant trees within the City of Sammamish.

What is a significant tree?

**Deciduous tree:** 12 inches or more in diameter when the trunk is measured 54 inches above ground

**Coniferous tree:** 8 inches or more in diameter when the trunk is measured 54 inches above ground

A Type B Right-of-Way permit is required to remove and replace a tree that is located within the street right-of-way.

**Learn more about tree removal requirements, how to apply for a permit, and how to measure a tree at [sammamish.us/trees](http://sammamish.us/trees).**



## New Art Piece Unveiled at City Hall

A new, permanent art piece was unveiled at Sammamish City Hall this spring at a gathering to recognize the generosity of the Snoqualmie Tribe. The art piece, a blanket titled “Connections,” was gifted to the City of Sammamish to symbolize the collaborative effort to establish a mass vaccination site at Lake Sammamish State Park.

In early 2021, the cities of Sammamish and Issaquah along with Eastside Fire & Rescue began working together to open a COVID-19 vaccination site for East King County residents but lacked vaccine doses. The Snoqualmie Tribe provided the vaccines necessary to make the mass vaccination site at Lake Sammamish State Park a reality. The site was named the Snoqualmie Tribe Vaccine Partnership and opened in April 2021.

Over 15,000 COVID-19 vaccine doses were administered through this partnership. By fall of 2021, three of the four zip codes that make up Sammamish and Issaquah saw vaccination rates over 90%. The Snoqualmie Tribe Vaccine Partnership was named the winner of the 11th annual King County Executive’s Award for Community Resilience.

The “Connections” blanket was made by Eighth Generation and was designed by two Snoqualmie Tribal members. Blankets such as this are usually gifted to honor the recipient for their contributions. The blanket now hangs in City Hall to serve as a reminder of the lifesaving efforts of our city, the City of Issaquah, Eastside Fire and Rescue, and the Snoqualmie Tribe to make our community a safer and more resilient place. Visit City Hall to see the Connections blanket for yourself!

**Interested in exploring more public art throughout Sammamish? Learn more at [sammamish.us/PublicArt](https://sammamish.us/PublicArt)**



## Senior Program Celebrates Grand Opening

More than 75 local seniors gathered at the Beaver Lake Lodge in mid-March to commemorate the grand opening of the Cross-Cultural Senior Program. Attendees participated in a variety of engaging activities and enjoyed a nutritious lunch with new friends.

This no-cost program is now available to residents year-round on Mondays, Wednesdays, and Fridays from 10 am to 2 pm at the Lodge. Seniors in Sammamish are welcome to drop in any time during the open hours for healthy lunch options and a diverse range of experiences such as exercise classes, creative arts, games, outdoor activities, music, informative workshops, and more.

The City of Sammamish is proud to partner with Indian American Community Services to deliver this new program. For more information, please contact [seniorcoord@iaww.org](mailto:seniorcoord@iaww.org), call 253-234-9989 (extension #3), or visit [sammamish.us/seniors](https://sammamish.us/seniors).



# A Dive Into Your Property Taxes

## How are property taxes determined?

Washington Property taxes are based on the value of the property and which tax districts it's located in. Tax districts include the city, schools, state, and county. Each tax district receives a portion of property taxes. Voter-approved levies in the taxing districts also receive a share. Levies are often used by schools and other taxing districts to raise funds for a specific purpose, such as capital improvements.

## How are property values assessed?

Property values are determined by the King County Assessor's office. Each year, they determine every property's fair market value. They look at the land itself – its size and location – as well as the buildings and other improvements on it. They also compare it with similar properties and recent sales in the area. Learn more about how property values are assessed at [kingcounty.gov/assessor](http://kingcounty.gov/assessor).

## What makes my property tax go up?

Property taxes are calculated to meet annual budget requests from the various taxing districts. By state law, the city can only increase the dollar amount of its request by 1% each year, regardless of how much property value increased. Voter-approved levies are not limited to a 1% annual increase and comprise the majority of the property tax increase.

## What do I pay for city services?

About 12.5% of your property taxes will go to the City of Sammamish in 2023. This helps fund city services like police and fire, along with parks, streets, and city facility maintenance and repairs. In 2023, the median home in Sammamish was valued around \$1.5 million. The owner of a \$1.5 million home will pay about \$12,000 total in property taxes this year, with about \$1,500 of that for city services.

# Looking for City Budget Information?

The City's 2023-2024 Biennial Budget is now available on the City's website in two formats. The 12-page Budget in Brief is a summarized look at the total funds available, how those funds are allotted to pay for city services, and a description of the services provided by the city.

For a more in-depth look at the City's budget, the full 2023-2024 Biennial Budget is also available on the City's website. The full budget includes goals for the 2023-2024 biennium, charts, staffing levels, and budget tables for each department as well as other information such as available revenue sources, services provided, planned capital projects, a long-range forecast, and the complete line-item budget by account number.

**To find the Budget in Brief or the full budget, go to [sammamish.us/budget](http://sammamish.us/budget). Printed copies of these documents may be requested via email at [finance@sammamish.us](mailto:finance@sammamish.us) or by calling (425) 295-0596.**

# Your Sammamish Police Department Cares



## Prom and Graduation Safety Tips

Prom and graduations are coming up, and they are reasons to celebrate! Being proactive and making good choices can help avoid unnecessary tragedy. Here are a few tips to help keep these events as safe as possible. Find more tips at [sammamish.us/police](http://sammamish.us/police).

### For Parents:

- **Communicate with your student.** Establish ground rules and a curfew. Know your child's agenda—including who they'll be with and where they're going. Talk to them about consent and saying no to peer pressure regarding alcohol/drugs. Keep in touch; have regular check-ins.
- **Be available.** Make an agreement that your student can call you at any time for help or a ride.

### For Students:

- **Travel safely.** Always wear a seatbelt; ensure everyone in the car has one on. Do not drive if you've been drinking/taking drugs or get into a car with anyone who has. Do not use your phone while driving.
- **Don't be afraid to ask for help.** Call your parents or another trusted adult if you run into trouble. Call 911 if you have an emergency.
- **Have fun!**



## You Can Help Prevent Burglaries

Sammamish was recently ranked by MoneyGeek as the 13th safest among 660 small cities in the U.S. Sammamish has also been given the distinction by SafeWise of being the Safest City in Washington for the last two years. However, as part of a populated and growing region, Sammamish is not immune to crime. Wherever you live, it's important to take steps to make your home less vulnerable to burglaries. Research shows that if it takes more than four or five minutes to break into a home, most burglars will go elsewhere.

### Burglary Prevention Tips

- Lock the doors and windows and turn on the alarm systems as part of your routine.
- Avoid posting on social media about vacation plans or expensive purchases.
- Secure your valuables at home. Take pictures of jewelry to assist in recovery if found.
- Lock gates, garages, and sheds after each use. Keep all doors and windows locked, even if you are just going out "for a minute."
- Call 911 if you see any suspicious persons or vehicles in your neighborhood.
- Find more tips at [sammamish.us/police](http://sammamish.us/police)

## About the Sammamish Police Department

The Sammamish Police Department is a contract partner of the King County Sheriff's Office. The department has 30 full-time officers. **Learn more at [sammamish.us/police](http://sammamish.us/police).**



## Introducing Metro Flex

Metro Flex is a new King County Metro on-demand transit service that replaced the Sammamish Community Ride program March 6th. *Community Ride differs from Community Van—see below.*

### Differences between Metro Flex and Community Ride

**New App:** A new Metro Flex app replaces the Community Ride On-Demand app.

**New Vehicles:** A new fleet of sleek, comfortable minivans replaces the coaches previously used. Wheelchair-accessible vehicles are available.

**New pickup and drop-off method:** The Metro Flex app provides expanded pickup and drop-off locations and clearly shows how and where to meet your vehicle. Riders receive a nearby pickup location that may require a short walk to pickup and drop-off points. (Riders with mobility issues can still request pickup at their door.)

**Notice of other transit options:** Customers may receive alternative transit options if they'll be best served by those modes. The Metro Flex app will give the best ride option based on provided pickup and drop-off points—whether that is a Metro Flex ride, a bus trip, or another transit service.

**For additional information, visit [sammamish.us/metroflex](https://sammamish.us/metroflex)**



## Drive or Ride in Community Van!

Community Van is a cost-effective rideshare program in partnership with King County Metro that connects riders and volunteer drivers to rider-requested destinations. It can be used one time or for recurring trips of up to two hours from Sammamish. Trips can accommodate up to 12 people and are scheduled by the Community Transportation Coordinator (CTC). Metro provides the van and pays for gas and tolls.

**Volunteer Drivers Needed!** Drivers must be licensed, at least 21, and meet safety criteria. Drivers' trips are always free.

**For further information, including how to schedule a ride or volunteer as a driver, visit [sammamish.us/communityvan](https://sammamish.us/communityvan).**



## Sammamish Transit Plan

In March, the Sammamish City Council approved a contract with DKS Associates to help develop the City of Sammamish's first Transit Plan. This exciting step kicks off the broad planning effort to analyze transit service in Sammamish and develop strategies to help improve service throughout the community. Opportunities to provide input will include online, in-person, and surveys. We hope you will participate to help shape the future of transit service in Sammamish!

The Transit Plan, which is anticipated to be adopted at the end of 2023, will provide a framework to guide future transportation investments in alignment with the community's vision and goals. It will facilitate the safe and efficient movement of people, accommodate anticipated growth, be environmentally and fiscally sustainable, and expand neighborhood access to transit services and improve non-motorized access to transit facilities. Many elements of the Transit Plan will also be included in the Transportation Element of the City's Comprehensive Plan Update, which is due at the end of 2024.

**For more information, go to [sammamish.us/TransitPlan](https://sammamish.us/TransitPlan) or contact Doug McIntyre, Public Works, [dmcintyre@sammamish.us](mailto:dmcintyre@sammamish.us); 425-295-0628. To learn about other ways to get involved in shaping Sammamish's future, go to [sammamish.us/BigIdeas](https://sammamish.us/BigIdeas).**



## Adopt-A-Drain Aims to Make a Collective Impact for Puget Sound and Cleaner Waters

Adopt-A-Drain is catching on in the Puget Sound neighborhoods. Launched in October 2021, there are now 13 cities on board with 1,018 volunteers adopting 1,777 drains and collecting almost 12,000 pounds of debris! Collectively, we are protecting our local waters.

The Adopt-a-Drain.org interactive website lets you pick a drain, name it, and track your impact. Most volunteers report it takes about 15 minutes to clean up around the drain one or two times a month. The program, founded by Minnesota-based Hamline University in 2014, now has 50 participating cities with over 10,000 adopters. Members in Washington are seeing rapid growth and hope more cities join and adopters sign up.

Puget Sound waterways surrounds us, and every time it rains, storm drain inlets convey rainwater directly into local waterbodies. Even when it rains just a little bit, the storm drains act as channels for trash and pollutants to flow into the nearest stream, river, or lake, and eventually Puget Sound. This interconnected ecosystem is vital to fish and wildlife.

The debris around the drain often includes trash, yard waste like grass clippings, and road grit that comes from engine exhaust and vehicle wear and tear. Here is the science behind these pollutants:

- Metals, like copper from brake pads, zinc from tires, and nickel and chromium from engine wear are harmful to fish, even in very low concentrations.
- Organic compounds like poly-aromatic hydrocarbons (PAHs) from exhaust and 6PPD-quinone, a tire preservative, are long-lived, cancer-causing, and accumulate in the sediment, causing long-term health impacts. Tiny quantities of 6PPD-Q have been shown to be lethal to Coho salmon in urban streams.
- Nutrients like vegetation and leaf drop accumulate on the street and wash into storm drains. This increase of nutrients in the downstream waterbodies causes excessive algae growth, blocking sunlight from reaching aquatic plants. Eventually, the algae die and decomposition bacteria suck oxygen from the water, causing dead zones.

Adopting a nearby drain and keeping it clean not only helps prevent flooding, but also keeps pollutants from getting into the drain in the first place. **Learn more and sign up at [wa.adopt-a-drain.org](http://wa.adopt-a-drain.org)**

## Get to Know Your Public Works Team

National Public Works Week is May 21-27 and it's a chance to celebrate the amazing work of public works personnel who plan, build, manage, and operate at the heart of local communities to improve quality of life each day.

### Did you know?

The City of Sammamish Public Works Department maintains:

**210+** centerline miles

**415+** lane miles

**735+** cul-de-sacs

**294** crosswalks

**500+** streetlights

**26** traffic signals

**45+** school zone flashers

**220 miles** of storm pipe

**450+** stormwater facilities

**60 miles** of ditches

**12,235+** storm drains

**8** stormwater dams

That's just one aspect of what Sammamish Public Works does for the community. They also do transportation planning, maintain right-of-way signs and vegetation, manage capital projects...the list goes on!



Join us for **Rig-A-Palooza on May 20** from 11 am to 2 pm on the plaza at City Hall to explore city vehicles and meet some of the people who keep Sammamish safe, clean, and FUN-ctioning!! The event is free and includes food trucks, bouncy houses, balloon artist, and face painting. Thank you to event sponsor World Taekwondo Center.

# BIG IDEAS:

Get

# INVOLVED!

2023 is an important year for Sammamish. Big plans are underway, and we want to hear from you! What are you interested in? Find a topic (or several!) that's meaningful to you and then go to [sammamish.us/BigIdeas](https://sammamish.us/BigIdeas) to sign up. It's that easy! We're excited to work together to shape Sammamish for generations to come.



**Sammamish's  
Future**



**Climate  
Action**

**Planning  
Major Parks**



**Housing**



**Transit**



**City Finances**



**Environmentally  
Sensitive Areas**



**Parks &  
Recreation**



**Diversity, Equity,  
Inclusion, &  
Belonging**



[sammamish.us/BigIdeas](https://sammamish.us/BigIdeas)





# Give Back and Get Noticed by Sponsoring a City Event

The City of Sammamish hosts year-round events with a diverse population in attendance. These events are advertised through the City Newsletter and website, the Park Department's Recreation Guide and Facebook page, and event posters. When you sponsor a City of Sammamish event, you have direct access to event attendees who you can reach with additional media coverage and event marketing.

No matter your business or budget, there is a sponsorship opportunity that will help promote your business and help you build stronger community connections.

If you are interested in more information, please visit [sammamish.us/sponsorship](http://sammamish.us/sponsorship) or contact Emily Scott at [escott@sammamish.us](mailto:escott@sammamish.us).



## Seeking Artists! Artist Spotlight Program

The Sammamish Arts Commission is initiating an exciting new program to recognize the diversity of artists who reside within our community. The goal is to acknowledge their creativity and to salute the gifts they bring into our lives through art. Every quarter, one local artist will have the opportunity to be spotlighted in a special publication where they will share their unique talent with the community.

To apply, please visit [sammamish.us/artscommission](http://sammamish.us/artscommission)



## Volunteer with the City of Sammamish

Did you know that people in our community volunteer throughout the year to help with parks, walking tours, ponds, storm drains, roads, and more? Volunteers provide valuable support and assistance for several programs and services, and you can be part of the action! Here are just a few ways to get involved:

- **Park Projects:** There are a variety of volunteer projects happening in parks around Sammamish. Tasks include native plantings, trail building, wetland and stream restoration, invasive plant management, and storm cleanup.
- **Sammamish Walks:** Sammamish Walks is seeking volunteer interns to help with Saturday morning walks during the summer.
- **Storm Drain Marking Program:** Volunteers are needed to place "Only Rain Down the Drain" signs near street storm drains. These are to alert community members of the connection between their yards and nearby waterways.
- **Adopt-A-Pond:** The Adopt-A-Pond program partners with residents to improve water quality, wildlife habitat, and the appearance of stormwater retention ponds.
- **Adopt-A-Road:** For this volunteer litter control program, organizations are assigned a section of street and agree to pick up litter at least two times a year. After a year of successful participation in the program, a sign with the organization's name is placed on their designated street.

Find more volunteer opportunities and sign up for updates at [sammamish.us/volunteer](http://sammamish.us/volunteer).



# SUMMER EVENTS

## Preview

Summer is right around the corner! Mark your calendar for these exciting opportunities to soak in the beautiful weather with outdoor theater and music.



### Summer Concerts at Pine Lake Park

Weekly outdoor concerts happen every Thursday in July and August from 6:30-8 pm at Pine Lake Park. These popular summer concerts are the City of Sammamish's longest running special event series. Concerts are free and open to the public. Bring your own dinner or purchase dinner onsite from a local food truck vendor. The Sammamish Kiwanis will provide ice cream for sale, too. It's a great way to take in a beautiful summer evening with family and friends.

**July 6:** Laurel Canyon Legacy

**July 13:** FarmStrong

**July 20:** Santa Poco

**July 27:** Eden

**August 3:** Cloud Cover

**August 10:** The Jewel Tones

**August 17:** The ABBAGraphs

**August 24:** Taylor Made



### Classical Plays Performed Outdoors

#### July 22

Seattle Shakespeare Company presents classical plays performed outdoors. Grab your picnic blanket or low-back chair and come enjoy the The Tempest.



### KidsFirst on the City Hall Plaza

KidsFirst performances take place Tuesdays at 1 pm outside on City Hall plaza under the pergola. These fun-filled performances are geared toward toddlers to elementary-age children. All events are free and open to the public so bring friends. Thank you to event sponsor World Taekwondo Center for supporting the fun!

**July 11:** Ella Bella Bee & The Pollinators, Funny & Educational Interactive Music

**July 18:** Reptile Isle- Hands on Adventure

**July 25:** Alex Zerbe's Zaniac Comedy Show

**August 1:** Eric Herman Music

**August 8:** Daffy Dave Show Interactive Comedy

**August 15:** Mikey Mike The Rad Scientist

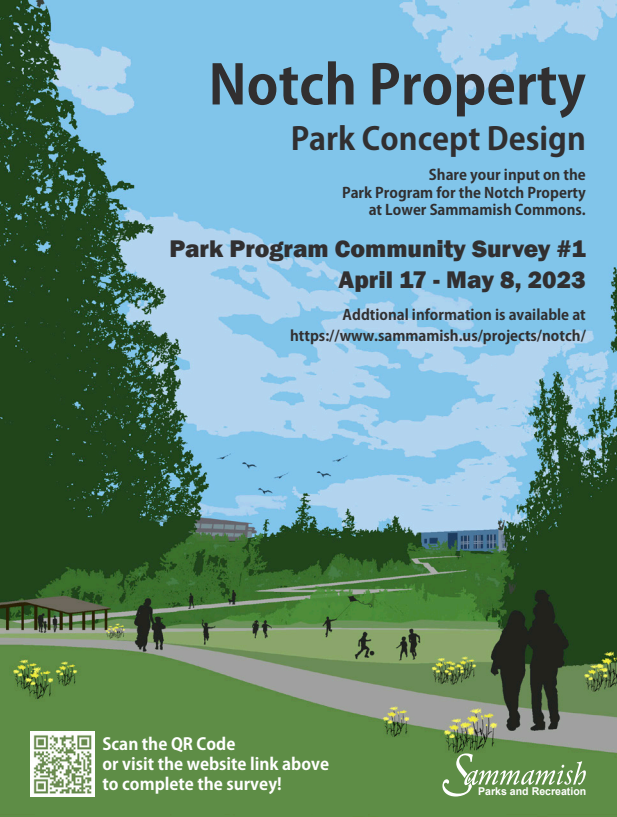
**August 22:** King County Library Activity

# Notch Property Park Concept Design

Share your input on the  
Park Program for the Notch Property  
at Lower Sammamish Commons.

**Park Program Community Survey #1**  
**April 17 - May 8, 2023**

Additional information is available at  
<https://www.sammamish.us/projects/notch/>



Scan the QR Code  
or visit the website link above  
to complete the survey!

*Sammamish*  
Parks and Recreation

Get

**INVOLVED!**

There will be multiple opportunities to share your feedback this spring and summer:

- Participate in our first community survey for Park Program (Proposed Amenities and Site Character), which will be available online through May 8
- Community Survey #2 of Preliminary Design Concepts: June – July 2023
- Community Survey #3 of Final Design Concept: September 2023

For more detailed information on the upcoming event, to participate in the online survey, and to stay up to date on the process, please visit the project website at [sammamish.us/notch](http://sammamish.us/notch).

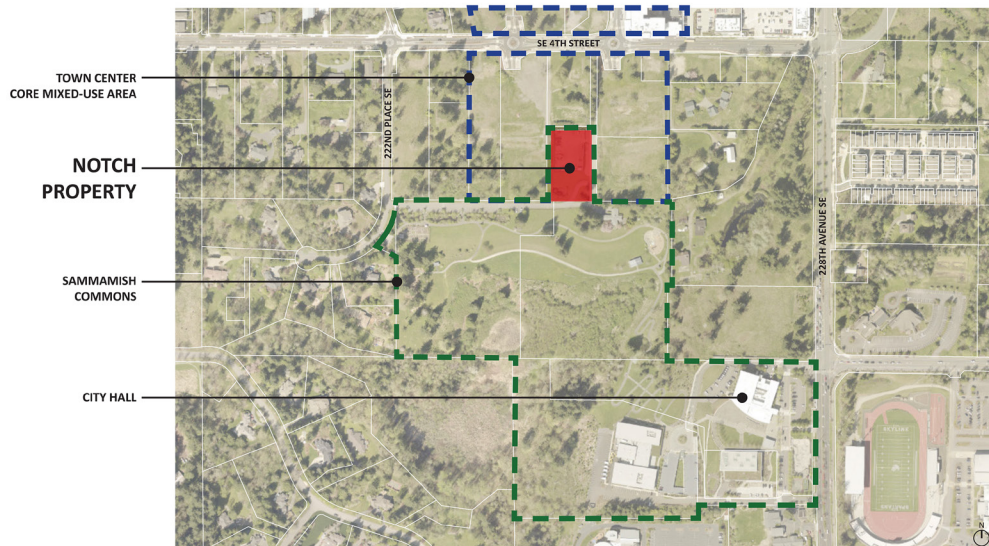
**To learn about other ways to get involved in shaping Sammamish's future, go to [sammamish.us/BigIdeas](http://sammamish.us/BigIdeas).**

# City to Start Concept Design for New Park: The Notch

Share your thoughts on the future of the Notch Property! Notched within the Town Center mixed-use area and directly adjacent to Lower Sammamish Commons is a 1.37-acre site currently referred to as the "Notch" property. The site is identified as part of the green spine in the Town Center plans, so this project will build upon the work already done. The next step is to develop the concept design, or initial "big picture" of the park which will guide future improvements.

## Concept Design Process

- **Phase 1: Site Investigation and Analysis** (Complete)
- **Phase 2: Park Program** - Spring 2023  
The park program establishes the uses and feel for the park. Community feedback will be combined with the results of site analysis and site studies to create the foundation for the concept design development.
- **Phase 3: Concept Design Development** - Summer 2023  
Two or three design alternatives will be prepared based upon the approved park program. The process will result in a final preferred concept design option. This phase will also include public involvement.
- **Phase 4: SEPA and Plan Adoption** - Fall/Late 2023  
SEPA (State Environmental Protection Act) review is expected in Fall 2023. City Council adoption of the plan is anticipated at the end of 2023. Funds for implementing the concept plan may be budgeted for in the future.



# How to Get Information & Get Involved

## Sammamish City Council Meetings

Regular city council meetings are held on the first Tuesday and third Tuesday of each month at 6:30 pm, with a study session on the second Tuesday at 6:30 pm. For agendas, minutes, and meeting videos, go to [sammamish.us/citycouncil](http://sammamish.us/citycouncil). To contact the Sammamish City Council, email [citycouncil@sammamish.us](mailto:citycouncil@sammamish.us).

## Sammamish Planning Commission

Sammamish Planning Commission meetings are held on the first and third Thursdays of each month at 6:30 pm. For agendas, minutes, and meeting videos, go to [sammamish.us/planningcommission](http://sammamish.us/planningcommission). To contact the Sammamish Planning Commission, email [planningcommission@sammamish.us](mailto:planningcommission@sammamish.us).

## Additional Public Meeting Information

Stay informed on city government with CivicWeb Portal. See a schedule of meetings, get meeting agendas and view past meetings at [sammamishwa.civicweb.net](http://sammamishwa.civicweb.net)

## Receive Email and Text Alerts

To subscribe to the City of Sammamish email updates and text alerts go to [sammamish.us/subscribe](http://sammamish.us/subscribe).

## City Newsletter

Suggestions or concerns? Contact [communications@sammamish.us](mailto:communications@sammamish.us)

## Follow City of Sammamish on Social Media



Scan the QR code or visit us at [www.sammamish.us](http://www.sammamish.us)

# RESOURCES FOR SAMMAMISH RESIDENTS

Police/Fire Emergency 911

Police Non-Emergency (206) 296-3311

Eastside Fire & Rescue (425) 313-3200

King County Sheriff (206) 263-9133

King County Animal Control (206) 296-7387

Garbage - Republic Services (425) 646-2400

Sammamish Permit Center (425) 295-0531

Sammamish Plateau Water and Sewer (425) 392-6256

NE Sammamish Water and Sewer (425) 868-1144

Community Van [communityvan@sammamish.us](mailto:communityvan@sammamish.us)

PRINTED ON RECYCLED PAPER WITH SOY-VEGETABLE BASED INKS.



City of Sammamish  
801 228th Ave SE,  
Sammamish, WA 98075  
425-295-0500 • [www.sammamish.us](http://www.sammamish.us)

PRSRT STD  
U.S. Postage  
**PAID**  
Seattle, WA  
Permit No. 1

**ECRWSS**  
**Postal Customer**



## June is Pride Month!

Pride Month is celebrated each year in June to honor the 1969 Stonewall Uprising in Manhattan, a tipping point for the Gay Liberation Movement in the United States. Pride Month commemorates years of struggle for civil rights and the ongoing pursuit of equal justice under the law for the lesbian, gay, bisexual, transgender, and queer community, as well as the accomplishments of LGBTQ individuals.

Join the City of Sammamish in the raising of the Progress Flag on Wednesday, May 31 at 4 pm at the Sammamish Commons. Hope to see you there!

## Report an Issue

With the My Sammamish App

Have an issue or concern? Report it on My Sammamish! Download the app on your smartphone. For more information, go to [sammamish.us/mysammamish](http://sammamish.us/mysammamish)

